



101, Anchorage Gaol Ferry Steps, Whapping Wharf, Bristol, BS1 6UZ

£280,000

BETTER
FOOD
Organic. Local. Ethical.

DISCOVER
WAY
www.cargo

This stunning apartment is located in the heart of the bustling harbourside, surrounded by a diverse range of restaurants and cafes including the popular Wapping Wharf development.

- In The Heart Of Wapping Wharf
- Minutes Walk to City Centre
- Surrounded by a Huge Range of Amenities
- Large Private Balcony
- No Onwards Chain
- High End Finishes
- Large Main Bedroom
- Upper Floor Apartment
- Modern Development
- Fantastic Investment Opportunity

The Property

Located in the heart of Wapping Wharf, a new, increasingly popular and exciting harbourside development, features a stylish and immaculate one bed apartment. Situated on the upper floors of this recently built and modern block, the property benefits from a high end finish and spacious feel as well as a large private balcony with floor to ceiling windows.

The open plan living space/kitchen is bright and airy and boasts a well-appointed kitchen with a number of gloss wall and base units, Corian style worktop, under-mounted sink with mixer tap and a range of integrated appliances such as, electric hob and oven with extractor over, dishwasher, fridge/freezer and microwave. The rest of the open plan space provides ample room to arrange an informal living area to relax in, and a dining table adjacent to the kitchen.

The large and spacious bedroom is fitted with built-in wardrobes with the bathroom across the hall which has been tiled through and includes a mains fed waterfall shower over bath, WC, and basin. Furthermore, the apartment includes two additional storage cupboards, one of which acts as a utility space featuring the washing machine.

Location - Harbourside

Wapping Wharf has rapidly become a much-loved part of Bristol, reflecting the independent spirit for which Bristol has become famous. From sourdough pizzas to organic fruit and vegetables, and from freshly baked bread to specialist coffees, Wapping Wharf is home to a plethora of independent eateries, spanning everything from fine dining to street food. The neighbourhood is also a popular shopping hotspot, with a florist, jeweller's, art gallery and clothing shop among the array of places to explore. Visitors are truly spoilt for choice with a barber's, yoga studio, massage and nail studio also based in this flourishing quarter. Gaol Ferry Steps, the tree-lined, pedestrianised route running through Wapping Wharf, has cafes, restaurants and shops located along either side, while CARGO brings together a range of independent traders housed within converted shipping containers. The area is located on the edge of Bristol's beautiful waterfront, with views across the glistening harbourside.

Other Information

Leasehold: 241 years remaining

Management Fee: £1,800 PA

Please Note

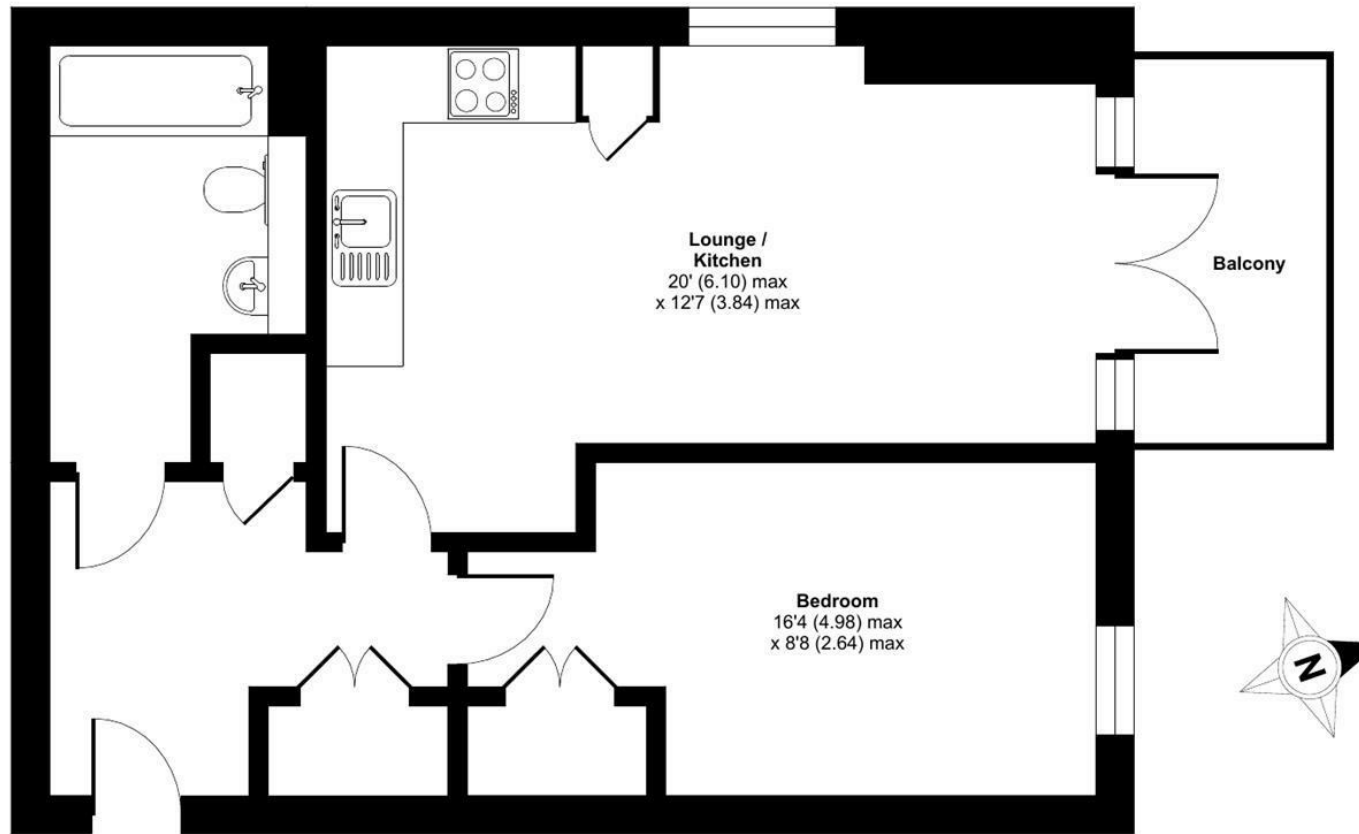
Hollis Morgan endeavour to make our sales details clear, accurate and reliable in line with the Consumer Protection from Unfair Trading Regulations 2008 but they should not be relied on as statements or representations of fact and they do not constitute any part of an offer or contract. All Hollis Morgan references to planning, tenants, boundaries, potential development, tenure etc is to be superseded by the information provided in your solicitors enquiries. It should not be assumed that this property has all the necessary Planning, Building Regulation or other consents. Any services, appliances and heating system(s) listed may not been checked or tested and you should rely on your own investigations. The seller does not make any representation or give any warranty in relation to the property and we have no authority to do so on behalf of the seller. Please note that in some instances the photographs may have been taken using a wide angle lens.



Anchorage, Gaol Ferry Steps, Bristol, BS1

Approximate Area = 529 sq ft / 49.1 sq m

For identification only - Not to scale



THIRD FLOOR



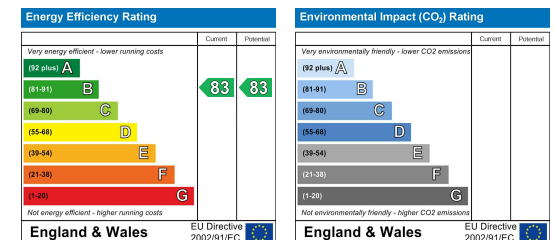
Floor plan produced in accordance with RICS Property Measurement Standards incorporating International Property Measurement Standards (IPMS2 Residential). © nchecon 2024. Produced for Hollis Morgan. REF: 1079018



TEL | 0117 933 9522 | 9 Waterloo Street, Clifton, Bristol BS8 4BT

www.hollismorgan.co.uk | post@hollismorgan.co.uk

Hollis Morgan Property Limited, registered in England, registered no 7275716
Registered address, 5 Upper Belgrave Road, Clifton, Bristol BS8 2XQ



hollis
morgan
